

Gortite® Manual Roll-Up Door



Installation Guide VPB0005 Version: July 29, 2025

Contact

Global Headquarters
2300 South Calhoun Road
New Berlin, WI 53151

Phone: +1 262 786 1500
sales@dynatect.com
dynatect.com

TABLE OF CONTENTS



SECTIONS

1. INTRODUCTION 3

2. REFERENCE DRAWING 4

3. TOOLS & EQUIPMENT..... 5

4. PENNANT PLATE MOUNTING 6

5. SILL PLATE DRILLING & MOUNTING 6

6. SIDE RAIL FITMENT & DRILLING ONLY 7

7. TOP RAIL FITMENT & DRILLING ONLY 8

8. MOUNTING OF D-SEAL 9

9. DOOR AJAR SWITCH MOUNTING 10

10. ROLLER & SHADE MOUNTING 12

 10.1 Roller Assembly Mounting 12

 10.2 Shade Mounting 12

11. SIDE RAIL INSTALLATION 15

12. BOLT COVER INSTALLATION 16

13. TESTING THE DOOR 17

14. CLEANING & MAINTENANCE 18

15. ADJUSTING ROLLER TENSION 19

1. INTRODUCTION

1.1 Welcome

Thank you for choosing Dynatect as your solution partner. This guide contains essential information on your new Gortite® Roll-Up Door. Please take the time to thoroughly read and understand this guide prior to installation, operation, or maintenance of the equipment. Please consider filing this guide so that it can be referenced again for future adjustment or maintenance purposes.

Since Dynatect is continually improving its products and services, this guide may include updates from a previous version. If you need additional copies of any instructions or if you have questions, recommendations, or feedback regarding the installation of your roll-up door, please contact Dynatect directly at 262-786-1500. We appreciate your business and the confidence you have placed in us. Please contact us if we can be of further assistance.

1.2 Inspect Your Shipment

Please thoroughly inspect the shipment and compare it to the bill of lading. Account for all items in the container or package and inspect the container and each item for damage and/or concealed damage. Notify the carrier immediately if there are any shortages, damages, or concealed damage; add any necessary notations to your bill of lading; and request that the carrier return and conduct an inspection.

File your claim with the carrier promptly and support it with photographs and all available documentation. Ensure all missing or damaged parts are replaced and that any mechanical problems are corrected prior to installing the unit. Dynatect is not responsible for collection of claims or replacement of lost or damaged materials due to carrier negligence.

1.3 Safety Disclaimer and Warranty Notice

The guidelines and procedures in this book are published in good faith and have been checked for accuracy, however, no warranties, either expressed or implied, are made; nor are successful results guaranteed. The author and editors do not take any responsibility for human error, typographical mistakes, or variations in individual work. Nor shall they be liable for special, consequential, or exemplary damages resulting, in whole or part, from the reader's utilization of, or reliance upon, this material. The reader is expressly warned to consider and adopt all safety precautions and activities presented herein to avoid potential hazards and liabilities. By following the instructions and guidelines contained herein, the reader willingly assumes all risks in connection with these instructions and guidelines.

1.4 Before beginning installation, please:

- Carefully read the complete installation manual.
- Make sure the door opening is square and free of weld crowns or other obstructions.
- When unpacking, be careful not to scratch the door and/or other components.
- Refer to the assembly drawing (**Figure 2**) to verify if all ordered components are present.

2. REFERENCE DRAWING

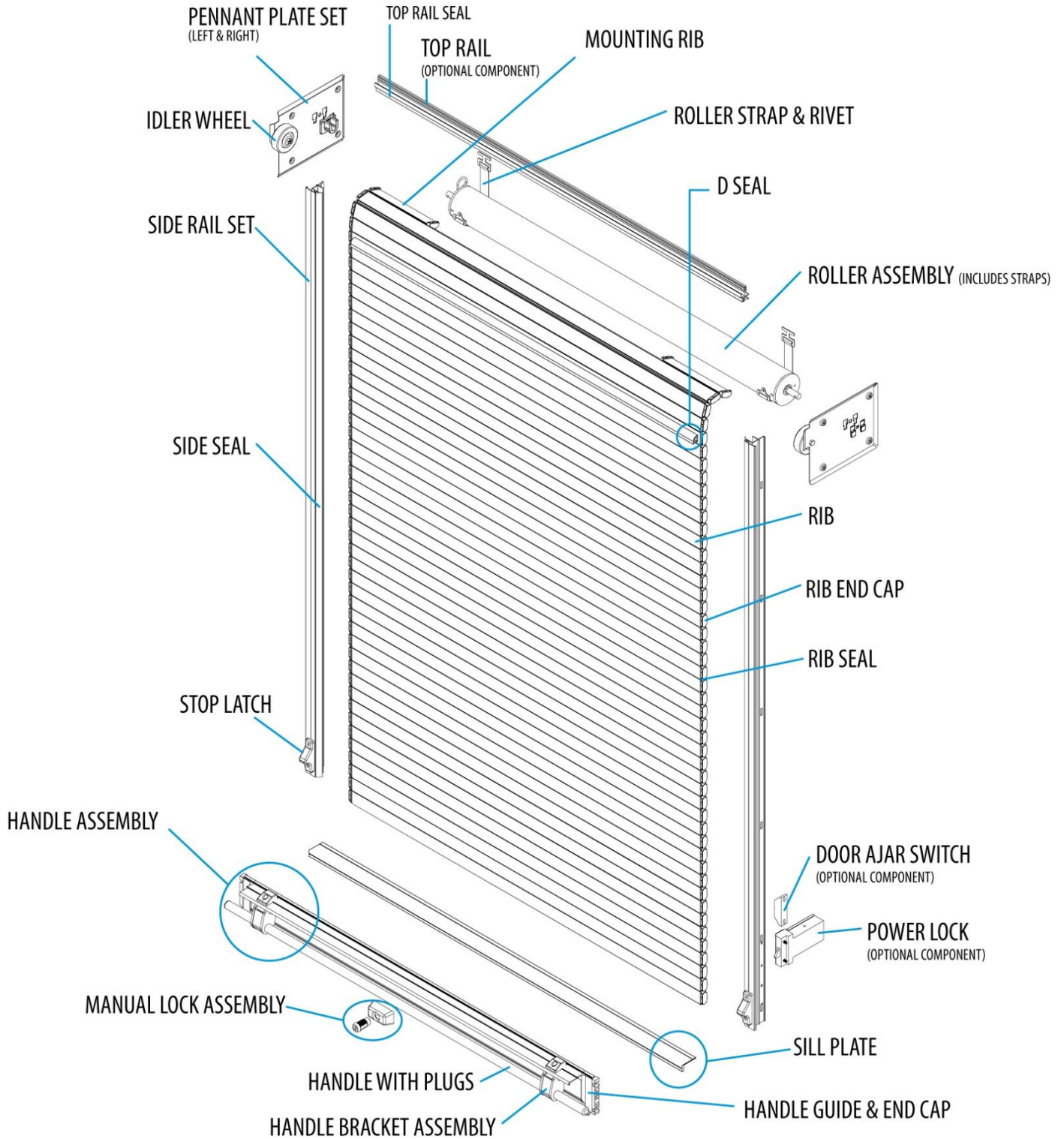


Figure 2

3. TOOLS & EQUIPMENT

Required Tools

- Tape Measure
- Marking Pen
- Fasteners (self-tapping preferred)
- Drill
- Drill Bits 11/64", 3/8" (lock rod option)
- Screwdriver
- Allen Wrench Set
- Permabond® 910

Mounting Hole Preparation

Dynatect recommends pre-drilling the mounting holes for all the roll-up door components. However, holes may also be drilled during component installation if preferred.

To pre-drill:

- Temporarily mount each roll-up door component in its designated location
- Drill the mounting holes
- Remove the component and set aside
- Reinstall the component when ready for final assembly

4. PENNANT PLATE MOUNTING

4.1 **Position** the pennant plate as shown in Figure #4

Mark the mounting hole locations and **drill** using an 11/64” drill bit.

Note: This procedure is typical for both sides of the cabinet.

4.2 Ensure that the pennant plates are mounted to surfaces that are aligned in the same plane and/or match the width of the door opening.

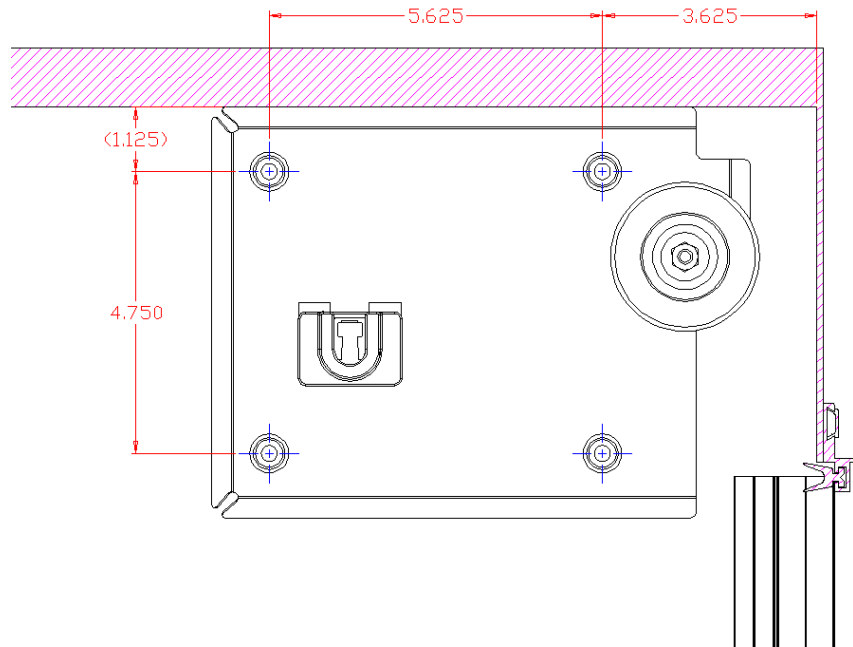


Figure #4

5. SILL PLATE DRILLING & MOUNTING

Note: The sill plate is an optional component

5.1 Position the sill plate as shown in Figure #5.

Mark the holes and drill 11/64” holes.

If no pre-drilled holes then drill 11/64” holes 12” apart.

Important: Sill plate must be in position when mounting the side rails.

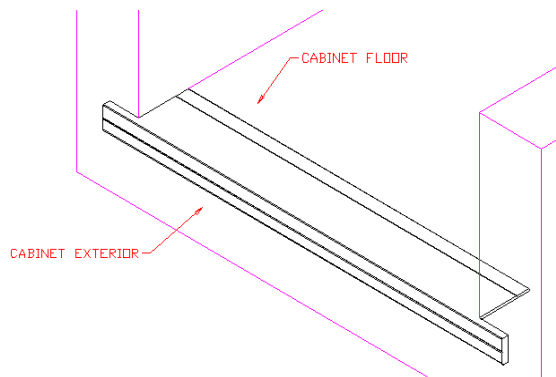


Figure #5

6. SIDE RAIL FITMENT & DRILLING ONLY

6.1 Position the side rail as shown in Figure #6a with the bottom resting on the cabinet floor, or on top of the sill plate as shown in Figure #6b with sill plate option.

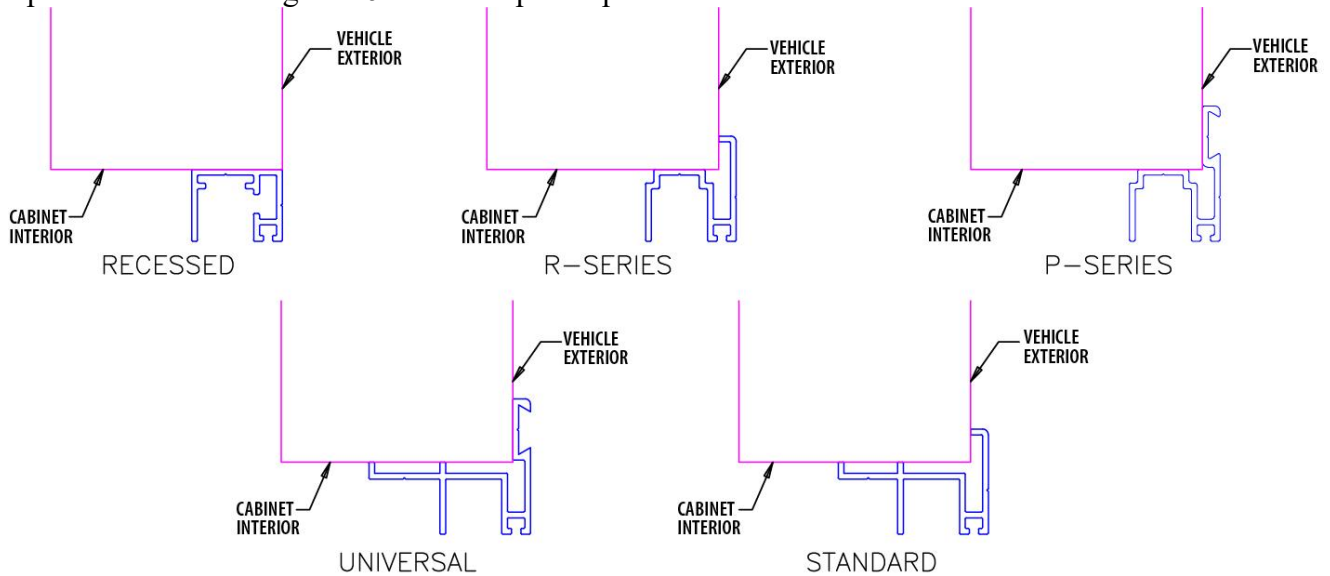


Figure #6a



Figure #6b

6.2 With the side rail temporarily in place:

- Mark the hole locations.
- Drill 11/64" pilot holes into the cabinet.
- If side rail not pre-drilled, drill holes approximately 12" apart through the side rail and cabinet.
- *Note: This procedure applies to both left and right side rails*

IMPORTANT:

- **Do not permanently fasten** the side rails at this stage.
- This step is for **positioning and drilling only**.
- Side rails must be **removed** before installing the roller and door shade (see Section #10)

6.3 For installations with an optional **manual lock**, use the pre-drilled hole in the side rail as a guide to drill a 3/8" hole into the vehicle body.

7. TOP RAIL FITMENT & DRILLING ONLY

Note: Top Rail is an optional component

7.1 Position the top rail against and flush with bottom edge of the header (approx. 1/4" above the side rails), and with the edges of the side rail. See Figures #7a & 7b

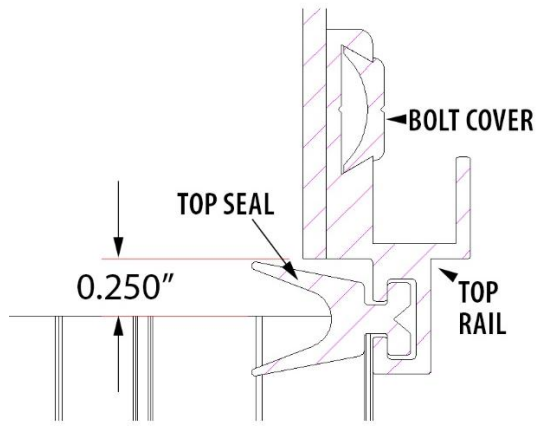


Figure #7a (side view)

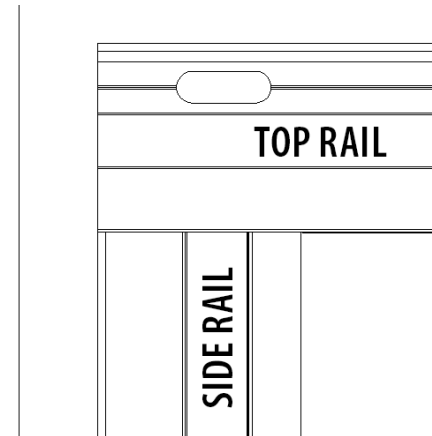


Figure #7b (front view)

7.2 Cut the top seal ends at an angle to fit between the side seals. See Figure #7c & 7d



Figure #7c

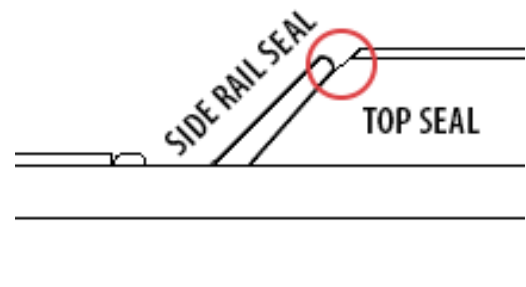


Figure #7d

7.3 If no pre-drilled holes, then drill holes no more than 12" apart. See Figure #7e

→ Important: The screws should not extend more than 1/8" into the compartment.

→ Important: If the D-Seal is not already attached to the door shade, see Section #8 before permanently fastening the Top Rail.



The screws should not extend more than 1/8" into the compartment.

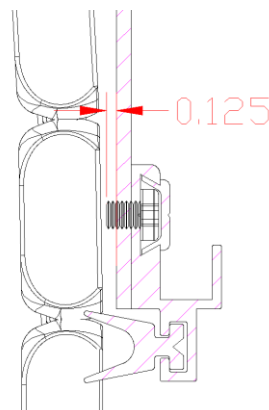


Figure #7e

8. MOUNTING OF D-SEAL

Note: D-Seal is typically factory-installed unless it is requested to be shipped loose.

If your roll up door was specified to have the door mounted D-seal shipped loose, the D-seal must be installed before securing the top rail.

- With the door fully closed and top rail temporarily held in place, mark the location of the D-seal so it sits **directly above the top seal**, as shown in Figure 8a.
- It is acceptable for the bulb of the D-seal to make contact with the top seal.
- **Do not position** the D-seal where it overlaps a **rib joint or slat seam**.
- Ensure the slat surface is **clean and dry** before applying the adhesive-backed D-seal.
- Orient the D-seal so the “fin” points upward, as illustrated.

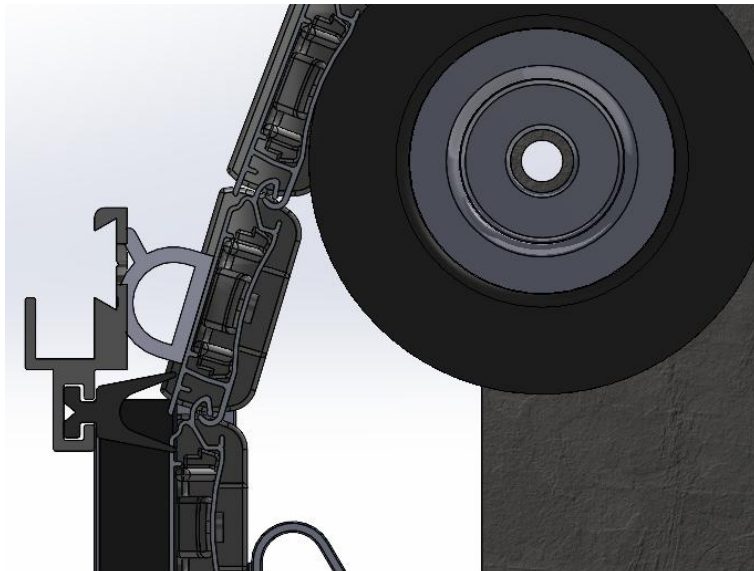
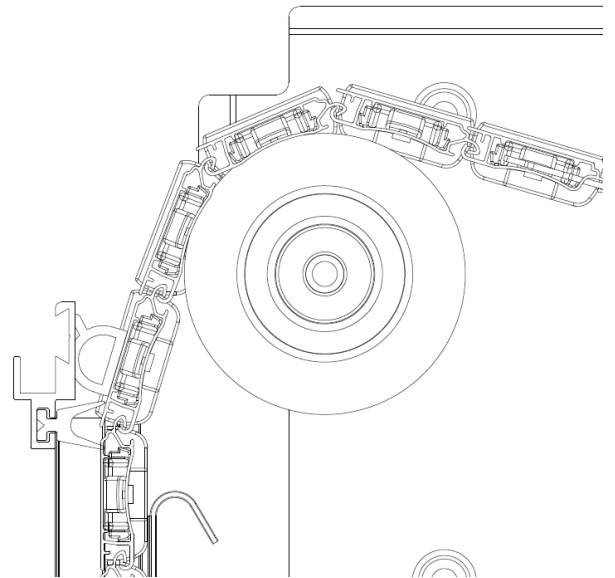


Figure #8a



9. DOOR AJAR SWITCH MOUNTING

Note: Ajar Switch only available as an option with standard and universal side rails

- **Measure and Cut the Slot:** Measure 1-1/8" from the bottom of the side rail. Cut a 3/4" wide x 21/32" deep slot. Refer to Figure #9a for visual guidance.

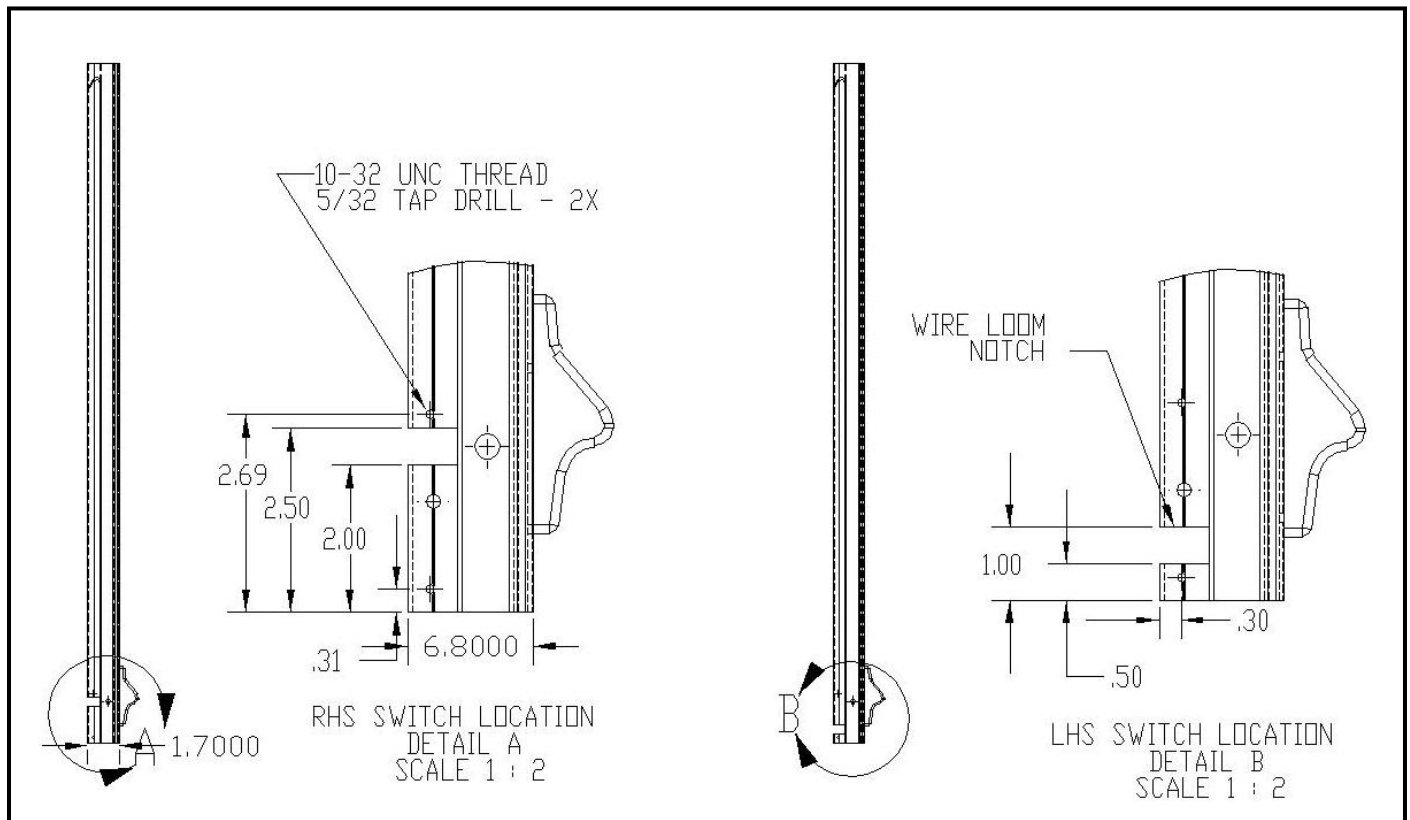


Figure #9a

- **Position and Mark the Switch + Drill and Tap Holes**
Place the switch against the side rail with the **bottom of the switch flush with the bottom of the side rail**.
Mark the mounting holes.
Drill and tap the marked holes for #10-32 UNC button head cap screws (BHCS).
See **Figure #9a** for reference.

- **Ensure Correct Orientation** - When mounting the switch, be sure the notch is facing the side rail. Refer to Figure #9 for correct orientation.

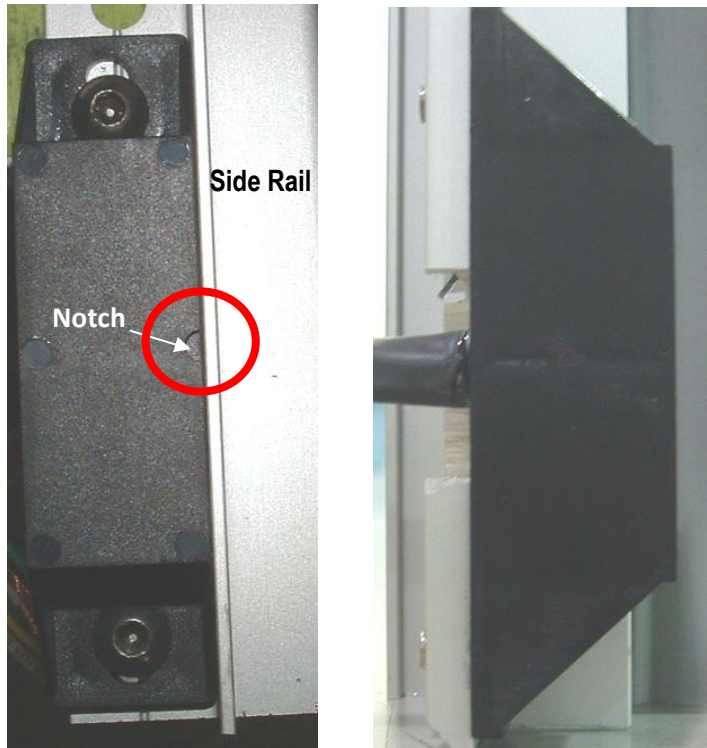


Figure #9b

9.4 Wiring - The wiring diagram is shown in Figure #9c

Switch Configuration Notes:

- This switch has two separate-isolated outputs that can be used to provide power to compartment lights and cab indicator lights without the need for any additional components or switches.
- The switch can be easily adapted to any existing wiring configuration and can be used with multiple or single cab indicator lights.

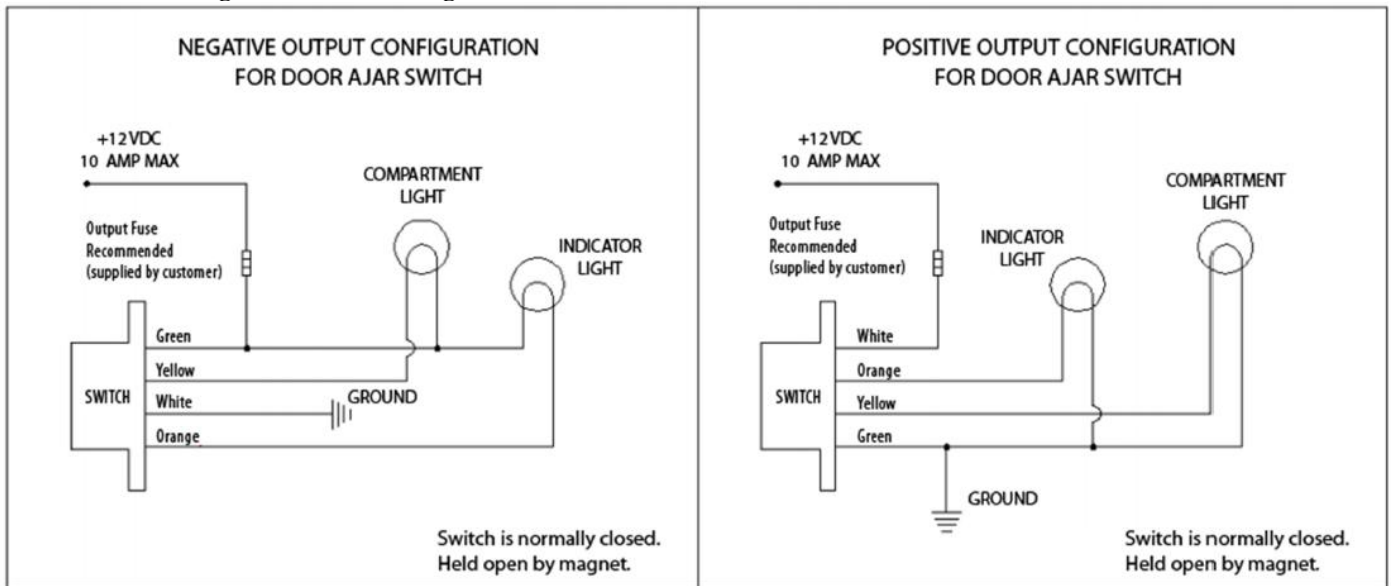



Figure #9c (Switch Configurations)

10. ROLLER & SHADE MOUNTING

10.1 Roller Assembly Mounting

- 
Important: Remove the side rails and top rail before installing the door. (See Sections 5 and 6 for layout preparation.)
 - If the pennant plates were removed, reinstall them now
- A) Place the roller shaft into the arbors, ensuring the “Right Side” label (See Figure #10a) is on the right when facing the front of the compartment. Pennant plate shown in Figure 10b.

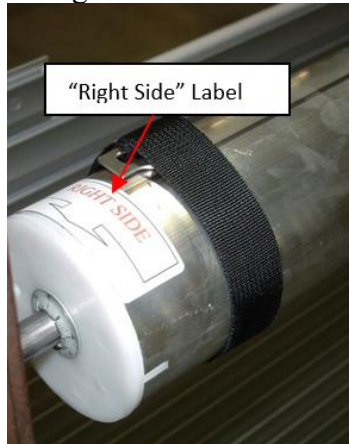


Figure #10a (Spring Roller Shaft)



Figure #10b (Pennant Plate)

- B) Insert the arbor clip at a 45-degree angle through the black plastic arbor and roller shaft, then rotate the arbor clip downward to snap over the plastic arbor. Repeat for both pennant plates. See Figure #10c & 10d.

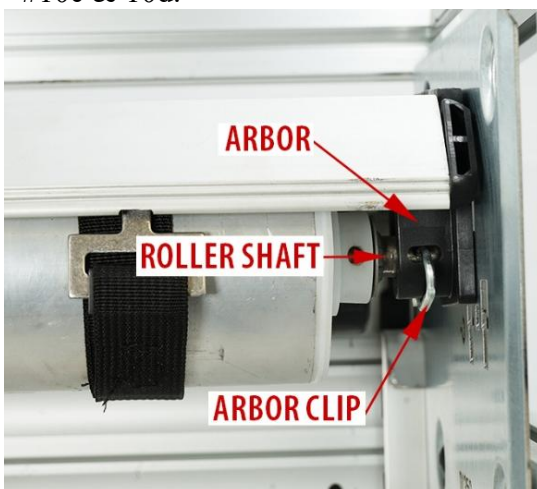


Figure #10c
(view from back of compartment)

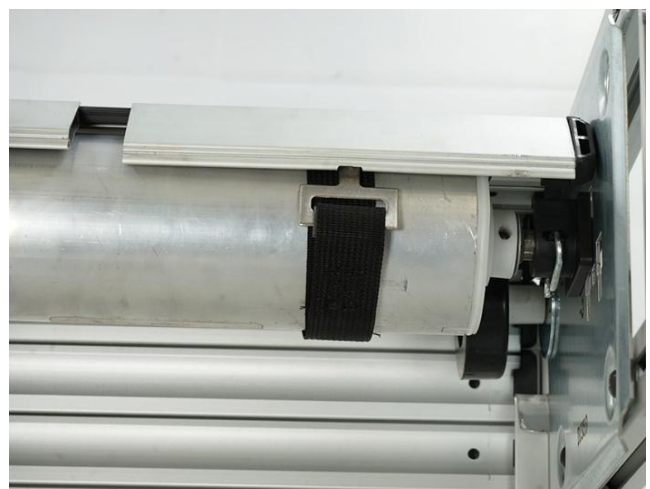


Figure #10d
(view from back of compartment)

Note: The side rails and top rail must be removed before proceeding with door installation.

10.2 Shade Mounting

- A) Slide the mounting ribs over the idler wheel and roller assembly.
 Allow the door to hang behind the roller, then insert the attachment clips into the mounting rib. (See Figures #10c-10e)



Figure #10c

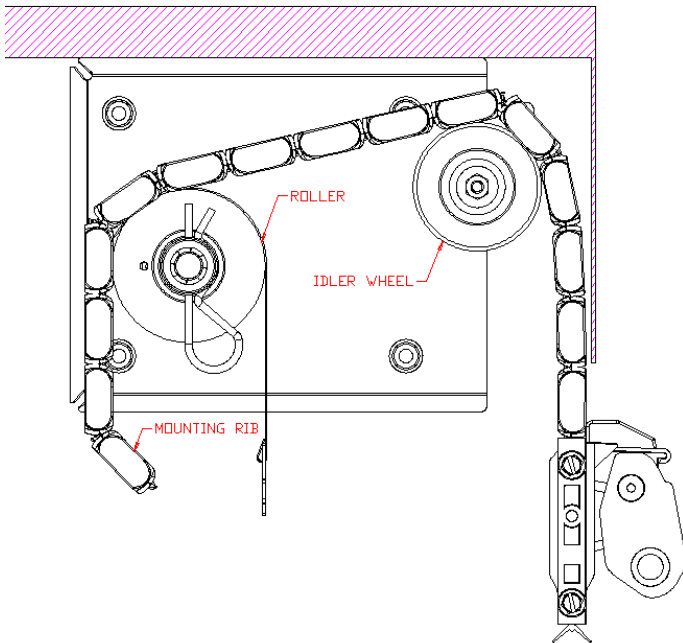


Figure #10d

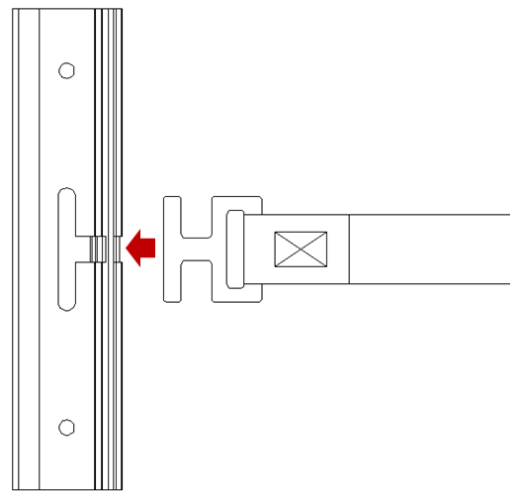


Figure #10e

- B) **Rotate the spring roller clockwise** to relieve pressure on the cotter pin, then **remove the cotter pin**. **Set the cotter pin aside** or tape it to the pennant plate for safekeeping. This is useful if spring tension needs to be adjusted later (rare) or if the shade must be removed in the future for component replacement.
 Next, **rotate the spring roller counter-clockwise** and **slowly roll the door up** into its open position. Refer to Figure #10f for visual guidance.

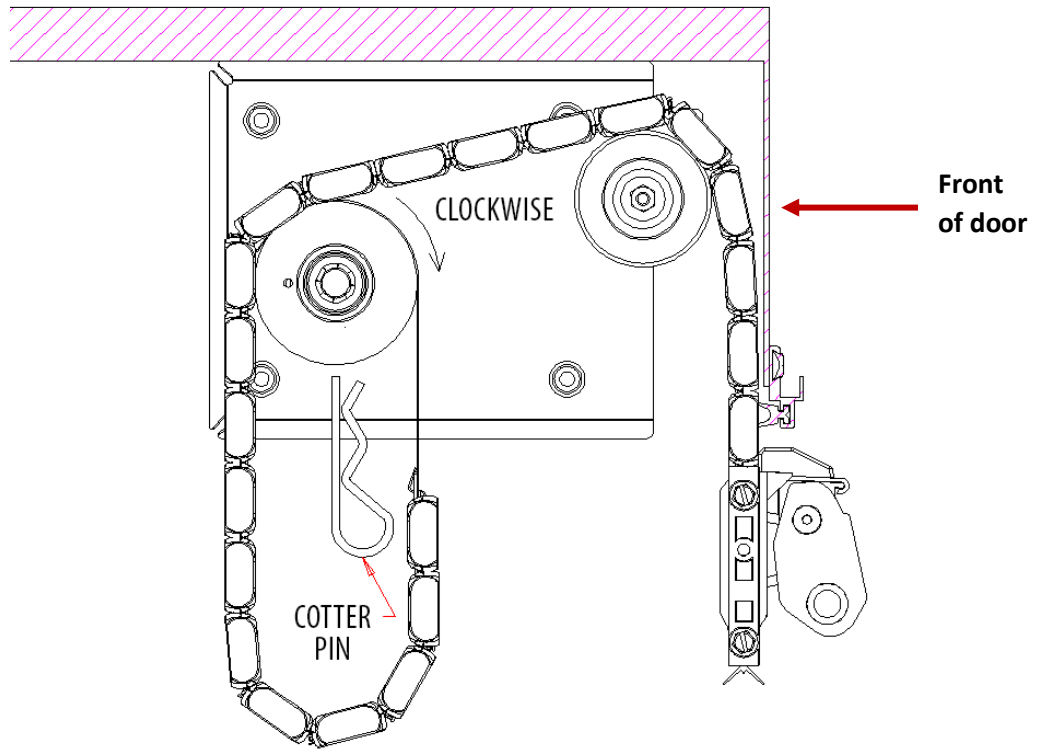


Figure #10f

11. SIDE RAIL INSTALLATION

Note: After installing the door shade and roller, reinstall the side rails as shown in Figure #11a

- A) Install the side rail by inserting the handle into the side rail and rotating the handle and side rail assembly toward the compartment.
Align the pre-drilled holes and attach the side rail to the compartment using fasteners of choice.
(Recommended fasteners: #10 self-tapping sheet metal screws.)
See Figures #11a & 11b.

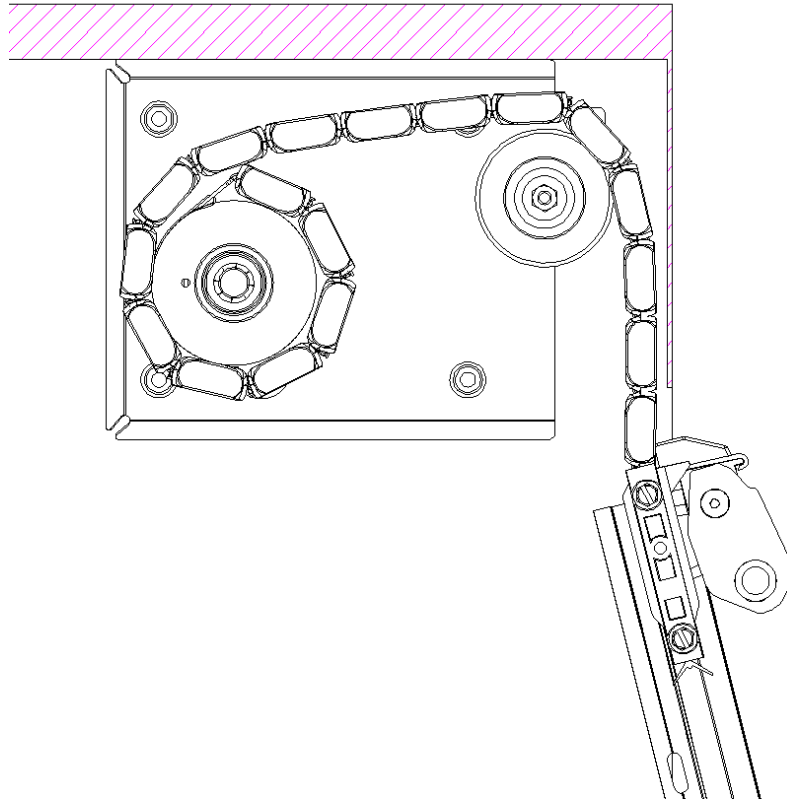


Figure #11a (top view)

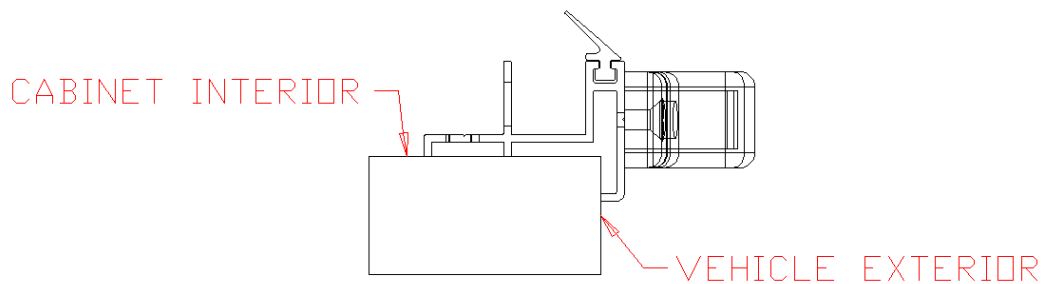


Figure 11b (side view)

- B) If no pre-drilled holes, drill 11/64” holes up to 12” apart and use fasteners of your choice.
(Recommended fasteners: #10 self-tapping sheet metal screws.)

12. BOLT COVER INSTALLATION

Note: Bolt Covers are an optional component.

- If installation of the roll-up door required the removal of a bolt cover, the bolt cover may be snapped into place or slid into place.
- Any excess or overhanging bolt cover may be trimmed away flush.
- For additional security, but not required, a drop of Permabond® 910 under each end of the bolt cover permanently secures the bolt cover in place.



Figure #12

13. TESTING THE DOOR

- Fully close the door.
- Release the handle bar from the handle stop latch.
- Cycle the door up and down a few times to check functionality.
- If door operation feels too stiff or loose, **read the following guidelines below**, and **reference Section #15 Appendix A: Adjusting Roller Tension**

Roller Tension Factory Setting

The Gortite Roll-Up Door's spring tension is factory-set based on the compartment width and door travel, providing optimal force for smooth operation.



Before making any adjustments, please read the following guidelines carefully:

- Inspect the door** for any obstructions or misalignments that may cause resistance.
(Example: End caps contacting the side rails due to the door opening being too narrow.)
- Check the compartment for squareness / perpendicularity.** A rectangular opening improves door performance. Confirm that the pennant plates are aligned and mounted evenly from the roof and header.
- Evaluate the door's movement:**
 - If the door opens with very little force but requires a lot of force to close, the preset tension may be **too high**.
 - If the door requires a lot of force to open but closes with very little force the preset tension may be **too low**.
- Lubricate the door** (dry lubricant) as needed to enhance operation

If the spring force is still not satisfactory after these checks, refer to **Section #15: Adjusting Roller Tension** for detailed tension adjustment instructions.

14. CLEANING & MAINTENANCE

- The Gortite Roll-Up Door requires very little maintenance, and is easy to clean.
- Any door with a painted surface should not be aggressively cleaned for 30 days from the time of shipment.
- When cleaning door slats, use only a mild non-abrasive soap and water.
- The side channels should also be inspected and cleaned periodically.
- Use the same type of soap as above and remove the dirt and grime from inside the channels.
- Silicone spray can be applied to ensure smooth operation.
- Do not use lithium or grease to lubricate the track. These lubricants only attract dirt.
- Smooth door operation is the goal, and cleaning any friction spots will help achieve this goal.
- After they are clean, the friction spots may be sprayed with dry silicone to enhance operation.

15. ADJUSTING ROLLER TENSION

To adjust the spring force from outside the compartment.

- 1) Open the door. Remove the fasteners from the side rails and remove the side rails. See Figure #15a

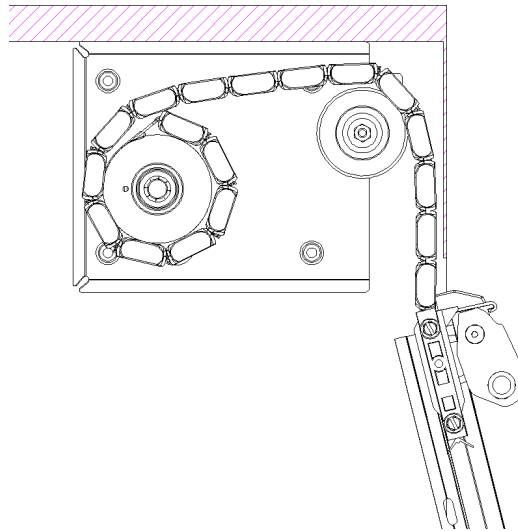


Figure #15a

- 2) Slowly pull the door down until the mounting ribs, roller strap, and the roller assembly is accessible.
- 3) Insert the cotter pin; remove the roller strap from the mounting rib by gently pushing up on the door to help release the attachment clip from the mounting rib. See Figure #15b

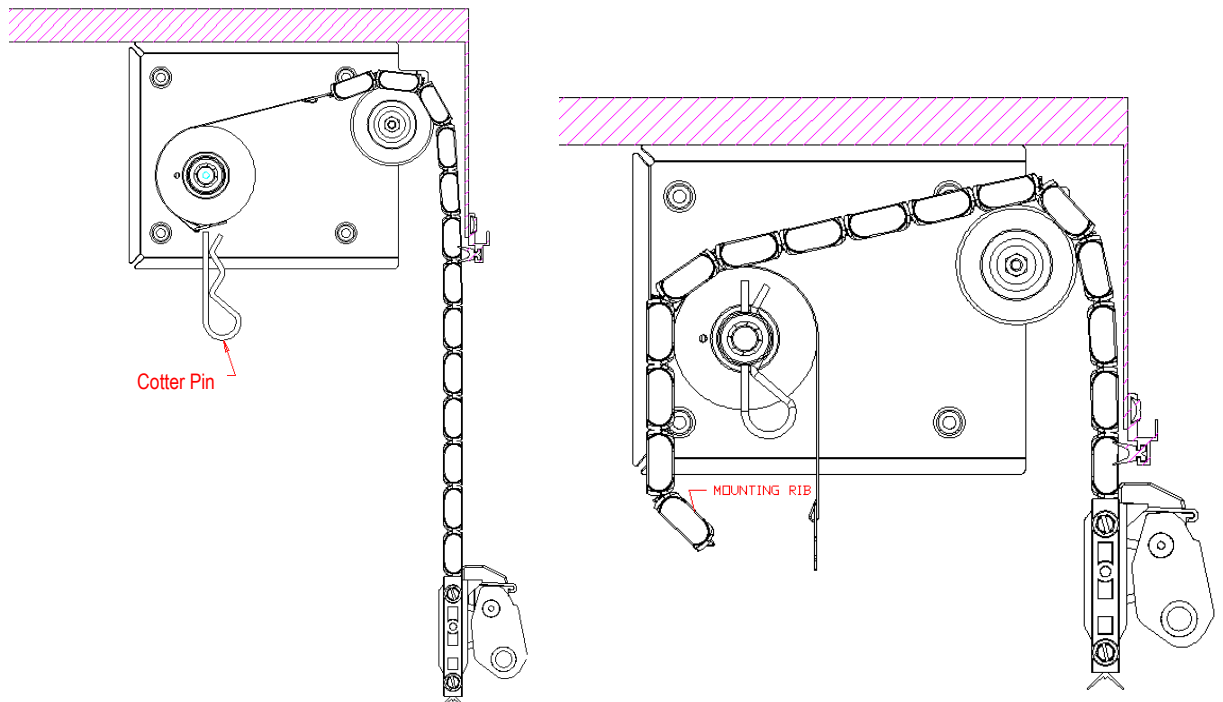


Figure #15b

- 4) Hold the roller assembly securely with both hands and have another person remove the cotter pin. Turn the roller assembly clockwise one half or one full rotation to increase force or allow the roller to rotate counterclockwise one half or one full rotation to decrease force. See Figure #15c

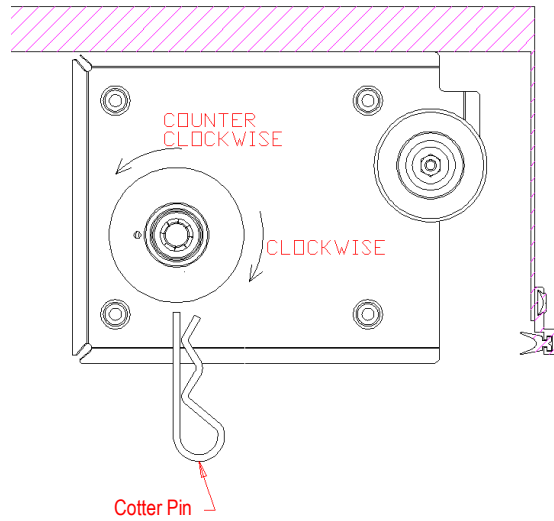


Figure #15c

- 5) Insert the cotter pin and connect the straps to the mounting ribs.
- 6) Remove the cotter pin and slowly let the tension back on the door. Direct the door over the idler rollers and raise the door up to the header.
- 7) Attach the side rails.

If you have any questions, please call Dynatect Manufacturing at **(800) 298-2066**
Or send us an email at **sales@dynatect.com**