

GORTIFLEX[®] MOLDED BELLOWS



Gortiflex bellows are constructed from a tube of elastomer with optional fabric reinforcement formed into a completely sealed cover. The standard shape is round but other shapes are possible with low-cost tooling.

Features/Benefits:

- Excellent extended-to-retracted ratio for a molded cover
- Pressure compensating components can be added to withstand moderate internal or external pressure
- Resists moisture, liquid or chemical spray, contaminants and dirt
- Suitable for outdoor environments with exposure to moisture, ice, sand, oil, UV radiation, and temperature variations (hot or cold).
- A zipper can be added for easy installation

Materials:

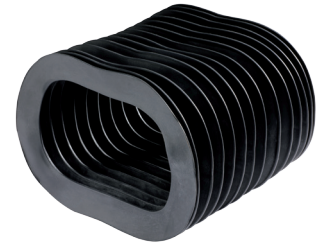
- Gorprene[™] (Chloroprene), Goralon[®] (CSM), Nitrile, Butyl, Fluoroelastomer (FKM), EPDM and Silicone/Fiberglass
- Fabric reinforcement options: nylon, para-aramid
- Specialty materials for food-grade requirements, flame retardant (FR), temperature extremes, military spec.

STOCK SIZES

Standard round profiles are available from stock. Refer to CT/CTH Gortiflex tubing or die set shield for more information.

Applications:

- Rod boot/ball screw cover
- Piping penetration seal
- Compressor and engine intake and exhaust manifold connection
- Flexible ducting
- Traction motor ventilation



TO SPECIFY, USE THE ENCLOSED-SHAPE BELLOWS RFQ FORM

PROTECTIVE COVERS
BELLOWS, BOOTS & COVERS | Enclosed-Shape Bellows

ENCLOSED-SHAPE BELLOWS | QUOTE REQUEST FORM

Date _____ Address _____
 Company Name _____ City _____ State/Prov. _____
 Contact _____ Country _____ Zip/Postal Code _____
 Quantity _____ Telephone _____ Fax _____
 Email _____

1. Application Information
 New or Replacement Application: New Design Replacement
 Protection For: Cylinder rod/ram Rod with ball bushing Ball screw Acme screw Spline Rectangular-shaped part
 Other (describe or send drawing) _____
 Cover Orientation: Horizontal Vertical
 Construction Preference: Dynatect Recommendation Gortiflex[®]-Molded Sewn Vulca-Seal[®] Thermisael Folded
 Cover Profile Shape: Round Oval* Rectangular/Square Tapered* Other/Custom

*Drawing required; PDF or DWG/DXF file preferred.

2. Operation Information
 Continuous (ambient) Temperature: _____ °F _____ °C
 Intermittent Temperature Range: Min. _____ Max. _____
 Frequency of Exposure: _____
 Distance from Heat Source (if applicable)*: _____
 Maximum Travel Speed*: _____ Movements/Day _____
 Acceleration*: _____
 Pressure _____ PSI Bellows cycles under pressure
 Vacuum _____ PSI Bellows cycles under pressure
*Please indicate unit of measurement for each value.

3. Environmental Information
 Heat Exposure: Weld Spatter Hot Chips/Swarf High Ambient Temperature (specify in "Operation Information")
 Abrasion Exposure: Metal Chips/Swarf Wood Chips/Shavings Light Particles/Dust Other _____
 Chemical or Liquid Exposure: Water Moisture Salt or Sea Spray Petroleum/Hydrocarbons Oils (non-petroleum)
 Hydraulic Fluid (petroleum-based) Hydraulic Fluid (phosphate ester-based)
 Acid Coolant Cutting Fluid
 Other (specify) _____
 Contaminant Exposure Level: Minimal Occasional Heavy
 Miscellaneous: UV/Ozone Outdoors Food-Grade/FDA Laser Beam Clean Room Camera/Light-Proof
 Other (specify) _____
 Regulatory Compliance: Standard _____ Bellows must be fire retardant (list standard to the left)
 Application Notes: _____

Phone: 262-786-1500 or 800-298-2066 | Fax: 262-786-3280 | Email: sales@dynatect.com | www.dynatect.com