

# VULCA-SEAL<sup>®</sup> BELLOWS

Vulca-Seal is made from separate sections of material joined by vulcanizing alternating seams to form convolutions, resulting in a completely sealed cover without stitch holes, seams or breaks. Available in any size or shape.

## Features/Benefits:

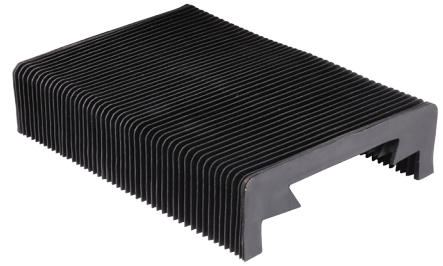
- Long life in abrasive environments
- Resistance to weld spatter, sparks, chemicals, and coolant
- Resists moderate internal or external pressure
- Attractive, clean, uniform appearance – no stitch holes, seams or breaks
- Withstands exposure to abrasives, chip loads, weld spatter, sparks, chemicals, coolants, and high temperatures
- A zipper can be added for easy installation (round shapes)

## Materials:

- Goralon<sup>®</sup> (CSM) coated polyester

## Applications:

- Way and linear rail covers
- Rod boots
- Ball screw covers
- Protection for grinding equipment
- Medical equipment (conceal mechanism, seal out dust, and enhance appearance)



PROTECTIVE COVERS | DYNATECT<sup>®</sup>

### ENCLOSED-SHAPE BELLOWS | QUOTE REQUEST FORM

Date \_\_\_\_\_ Address \_\_\_\_\_  
 Company Name \_\_\_\_\_ City \_\_\_\_\_ State/Prov \_\_\_\_\_  
 Contact \_\_\_\_\_ Country \_\_\_\_\_ Zip/Postal Code \_\_\_\_\_  
 Quantity \_\_\_\_\_ Telephone \_\_\_\_\_ Fax \_\_\_\_\_  
 Email \_\_\_\_\_

**1. Application Information**  
 New or Replacement Application:  New Design  Replacement  
 Protection For:  Corrosion/Infection  Heat with ball handling  Ball screw  Chain screw  Spline  Rectangular shaped part  
 Other (describe or send drawing): \_\_\_\_\_  
 Cover Orientation:  Horizontal  Vertical  
 Construction Preference:  Hydraulic Recommendation  Synthetic/Molded  Sewn  Vulca Seal<sup>®</sup>  Chemical  Clad  
 Cover Profile Shape:  Round  Oval  Rectangular/Square  Tapered  Other/Custom

**2. Operation Information**  
 Continuous Ambient Temperature: \_\_\_\_\_ °F \_\_\_\_\_ °C  
 Intermittent Temperature Range: Min. \_\_\_\_\_ Max. \_\_\_\_\_  
 Frequency of Exposure: \_\_\_\_\_  
 Distance from Heat Source (if applicable): \_\_\_\_\_  
 Maximum Travel Speed\*: \_\_\_\_\_ Movements/Day \_\_\_\_\_  
 Acceleration\*: \_\_\_\_\_  
 Pressure \_\_\_\_\_ PSI  Bellows cycles under pressure  
 Vacuum \_\_\_\_\_ PSI  Bellows cycles under pressure

**3. Environmental Information**  
 Heat Exposure:  Weld Spatter  Hot Chips/Swarf  High Ambient Temperature (specify in "Operation Information")  
 Abrasion Exposure:  Metal Chips/Swarf  Metal Chips/Sharps  Light Particles/Dust  Other \_\_\_\_\_  
 Chemical or Liquid Exposure:  Oil/Water  Salt or Sea Spray  Petroleum/Hydrocarbons  Non-petroleum  
 Hydraulic Fluid (specify ester based)  Hydraulic Fluid (phosphate ester based)  
 Acid  Coolant  Cutting Fluid  Other (specify) \_\_\_\_\_  
 Contaminant Exposure Level:  Minimal  Occasional  Heavy  
 Miscellaneous:  UV/Ozone  Oubrosion  Food Grade/FDA  Laser Beam  Clean Room  Camera/Light Proof  
 Other (specify) \_\_\_\_\_  
 Regulatory Compliance: Standard \_\_\_\_\_  
 Bellows must be fire retardant (list standard to the left)  
 Application Notes: \_\_\_\_\_

Phone: 262-786-1500 or 800-298-2066 | Fax: 262-786-3280 | Email: sales@dynatect.com | www.dynatect.com

TO SPECIFY, USE THE ENCLOSED-SHAPE BELLOWS RFQ FORM, THE WAY COVER RFQ FORM, OR THE FLAT/STRIP BELLOWS RFQ FORM

PROTECTIVE COVERS | DYNATECT<sup>®</sup>

### FLAT/STRIP-TYPE BELLOWS | QUOTE REQUEST FORM

Date \_\_\_\_\_ Address \_\_\_\_\_  
 Company Name \_\_\_\_\_ City \_\_\_\_\_ State/Prov \_\_\_\_\_  
 Contact \_\_\_\_\_ Country \_\_\_\_\_ Zip/Postal Code \_\_\_\_\_  
 Quantity \_\_\_\_\_ Telephone \_\_\_\_\_ Fax \_\_\_\_\_  
 Email \_\_\_\_\_

**1. Application Information**  
 New or Replacement Application:  New Design  Replacement  
 Cover Orientation:  Horizontal  Vertical  Cross Roll  
 Construction Preference:  Hydraulic Recommendation  Heat Sealed  Sewn  Sewn/Folded  Vulca Seal<sup>®</sup>

**2. Operation Information**  
 Continuous Ambient Temperature: \_\_\_\_\_ °F \_\_\_\_\_ °C  
 Intermittent Temperature Range: Min. \_\_\_\_\_ Max. \_\_\_\_\_  
 Frequency of Exposure: \_\_\_\_\_  
 Distance from Heat Source (if applicable): \_\_\_\_\_  
 Maximum Travel Speed\*: \_\_\_\_\_ Movements/Day \_\_\_\_\_  
 Acceleration\*: \_\_\_\_\_

**3. Environmental Information**  
 Heat Exposure:  Weld Spatter  Hot Chips/Swarf  High Ambient Temperature (specify in "Operation Information")  
 Abrasion Exposure:  Metal Chips/Swarf  Wood Chips/Sharps  Light Particles/Dust  Other \_\_\_\_\_  
 Chemical or Liquid Exposure:  Oil/Water  Salt or Sea Spray  Petroleum/Hydrocarbons  Non-petroleum  
 Hydraulic Fluid (specify ester based)  Hydraulic Fluid (phosphate ester based)  
 Acid  Coolant  Cutting Fluid  Other (specify) \_\_\_\_\_  
 Contaminant Exposure Level:  Minimal  Occasional  Heavy  
 Miscellaneous:  UV/Ozone  Oubrosion  Food Grade/FDA  Laser Beam  Clean Room  Other (specify) \_\_\_\_\_  
 Other (specify) \_\_\_\_\_  
 Regulatory Compliance: Standard \_\_\_\_\_  
 Bellows must be fire retardant (list standard to the left)  
 Application Notes: \_\_\_\_\_

can be included upon request. It is recommended to provide a drawing.  Yes  No  
 \*Specify fire-retardant material.  Yes  No  
 \*\*Specify fire-retardant material.  Yes  No  
 Channel Material:  Aluminum  Steel  Stainless Steel

Width: \_\_\_\_\_ in \_\_\_\_\_ mm  
 Height: \_\_\_\_\_ in \_\_\_\_\_ mm  
 or, indicate travel and we will advise length \*travel distance  
 I/O specification: \_\_\_\_\_ in \_\_\_\_\_ mm  
 Mounting holes as specified per customer drawing and blank, without bolt holes. Reference above.  
 End:  Double Flange Standard  Double Flange  
 Flat  Hook & Loop Fastener  
 Other (specify) possible drawing

Fax: 262-786-3280 | Email: sales@dynatect.com | www.dynatect.com

PROTECTIVE COVERS | DYNATECT<sup>®</sup>

### WAY COVER BELLOWS | QUOTE REQUEST FORM

NEW COVER (only fill out pages 17 and 18) - OR - REPLACEMENT COVER (only fill out pages 17 and 19)

Date \_\_\_\_\_ Address \_\_\_\_\_  
 Company Name \_\_\_\_\_ City \_\_\_\_\_ State/Prov \_\_\_\_\_  
 Contact \_\_\_\_\_ Country \_\_\_\_\_ Zip/Postal Code \_\_\_\_\_  
 Quantity \_\_\_\_\_ Telephone \_\_\_\_\_ Fax \_\_\_\_\_  
 Email \_\_\_\_\_

**1. Application Information** (Please supply a sketch/drawing/CAD file (DWG or DXF file format) of your application).  
 New Cover  Replacement Cover  
 Describe the type of equipment or part you need to cover: \_\_\_\_\_  
 Machine Make: \_\_\_\_\_ Machine Model: \_\_\_\_\_  
 Cover Orientation:  Horizontal  Vertical  Cross Roll

**2. Operation Information**  
 Continuous Ambient Temperature: \_\_\_\_\_ °F \_\_\_\_\_ °C  
 Intermittent Temperature Range: Min. \_\_\_\_\_ Max. \_\_\_\_\_  
 Frequency of Exposure: \_\_\_\_\_  
 Distance from Heat Source (if applicable): \_\_\_\_\_  
 Maximum Travel Speed\*: \_\_\_\_\_ Movements/Day \_\_\_\_\_  
 Acceleration\*: \_\_\_\_\_

**3. Environmental Information**  
 Heat Exposure:  Weld Spatter  Hot Chips/Swarf  High Ambient Temperature (specify in "Operation Information")  
 Abrasion Exposure:  Metal Chips/Swarf  Metal Chips/Sharps  Light Particles/Dust  Other \_\_\_\_\_  
 Chemical or Liquid Exposure:  Oil/Water  Salt or Sea Spray  Petroleum/Hydrocarbons  Non-petroleum  
 Hydraulic Fluid (specify ester based)  Hydraulic Fluid (phosphate ester based)  
 Acid  Coolant  Cutting Fluid  Other (specify) \_\_\_\_\_  
 Contaminant Exposure Level:  Minimal  Occasional  Heavy  
 Miscellaneous:  UV/Ozone  Oubrosion  Food Grade/FDA  Laser Beam  Clean Room  Other (specify) \_\_\_\_\_  
 Other (specify) \_\_\_\_\_  
 Regulatory Compliance: Standard \_\_\_\_\_  
 Bellows must be fire retardant (list standard to the left)  
 Application Notes: \_\_\_\_\_

**4. Extended/Retracted/Travel Requirements**  
 Specify extended and retracted length requirements, or indicate travel and we will advise retracted length. Extended length - retracted length - travel distance.  
 Dimensions specified in:  in  mm  
 (A) Extended length \_\_\_\_\_  
 (B) Retracted length \_\_\_\_\_  
 (C) Travel Distance \_\_\_\_\_

Phone: 262-786-1500 or 800-298-2066 | Fax: 262-786-3280 | Email: sales@dynatect.com | www.dynatect.com